

UPPERCASE CHARACTER
IS CLEAN STYLES



LOWERCASE CHARACTER
IS TEXTURED STYLES



Sample with a.



a

For slant top tail such as

K

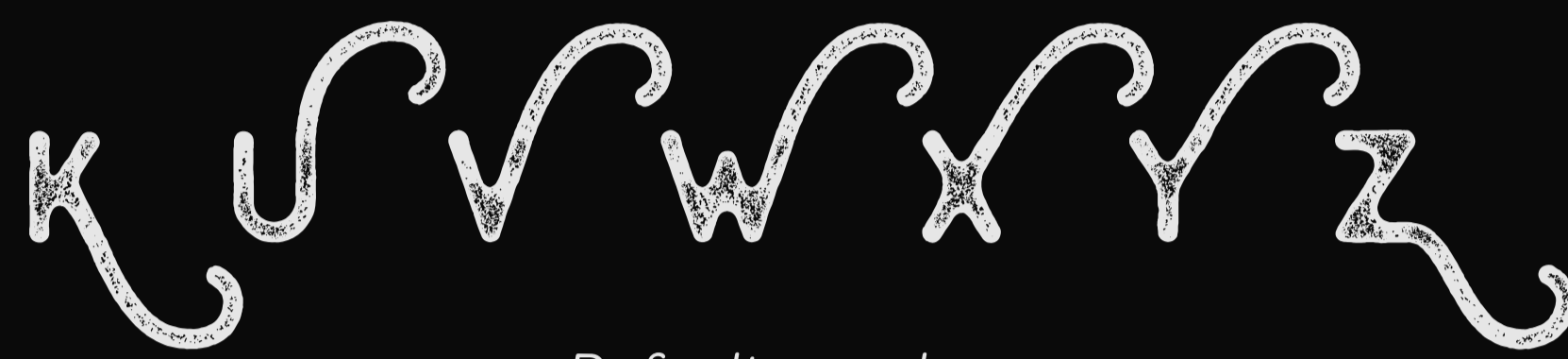


b

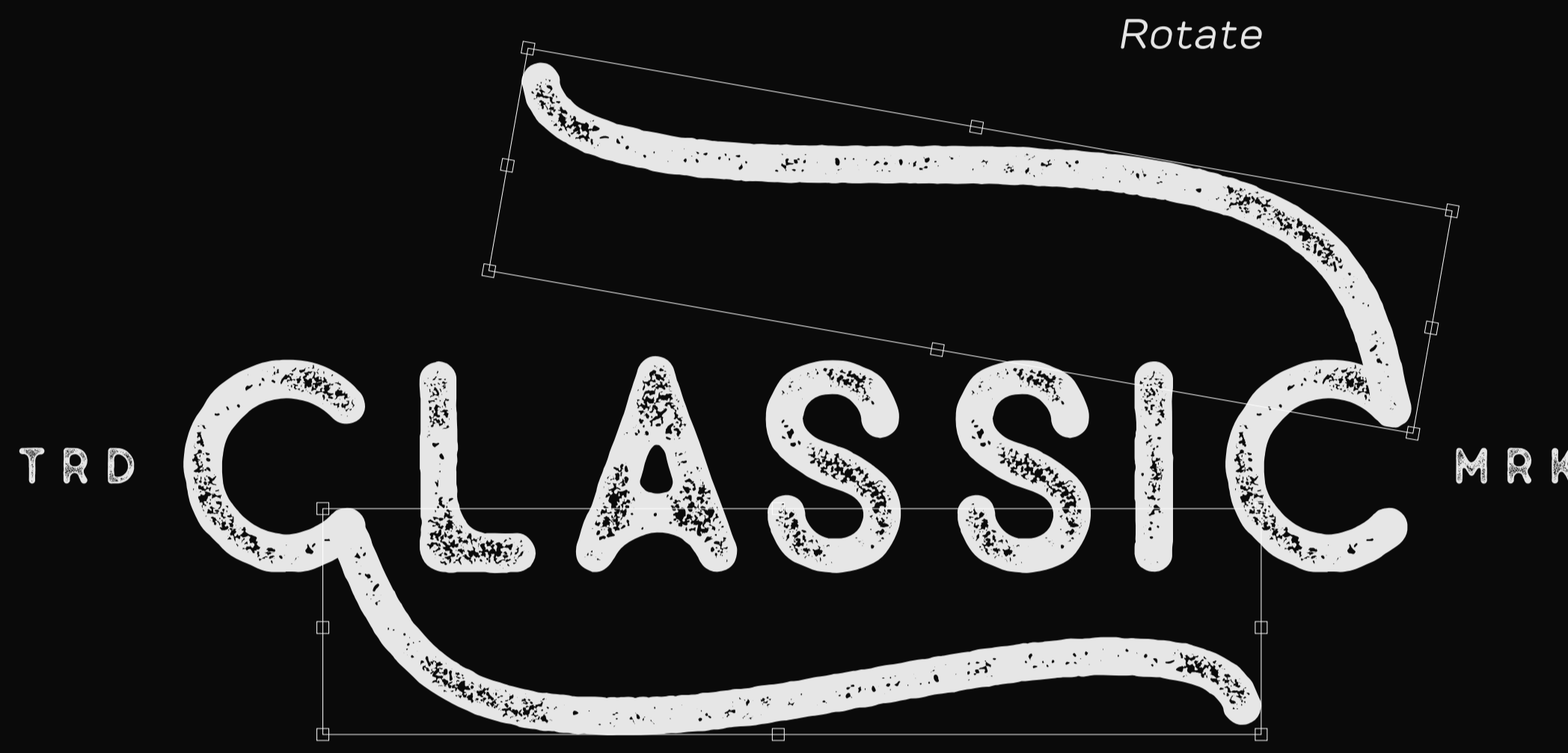
For straight top tail such as

HJLN

Additional swash for the default swash to be paired with **top tail** of lowercase character.



Default swash



Sample with c.



c

For slant bottom tail such as

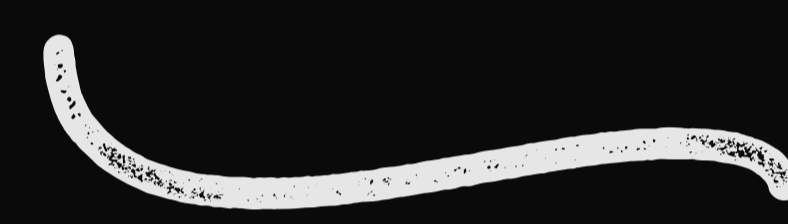
ACKNQRX



d

For flat bottom tail such as

ELZ



e

For straight bottom tail such as

GHMN

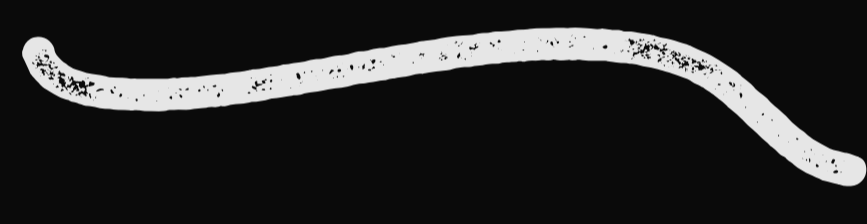
Swash to be paired with **bottom tail** of lowercase character.



f

For slant top tail such as

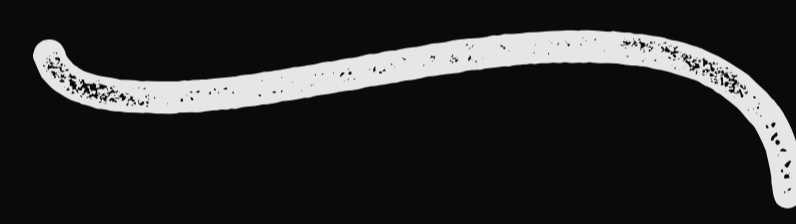
ACKNQRX



g

For flat top tail such as

ELZ



h

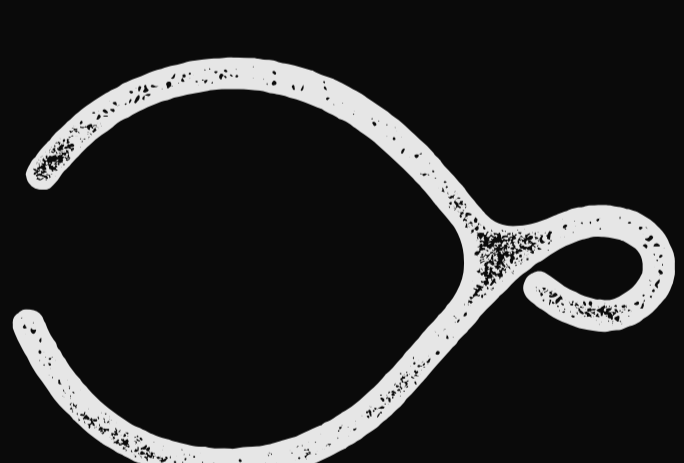
For straight top tail such as

GHMNU

Swash to be paired with **top tail** of lowercase character.



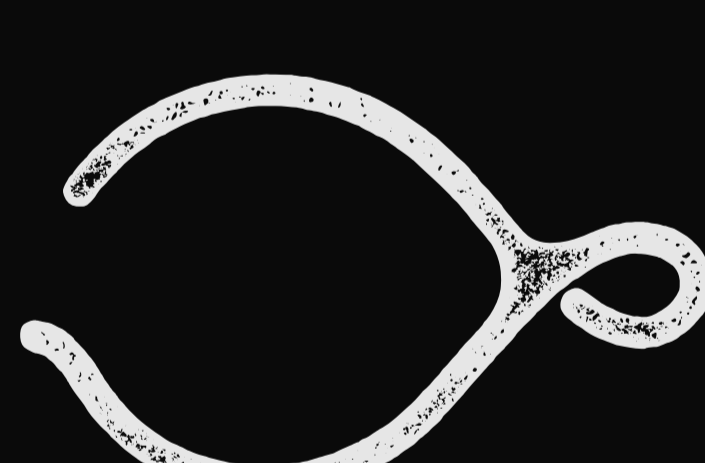
Sample with i



i

For slant bottom tail such as

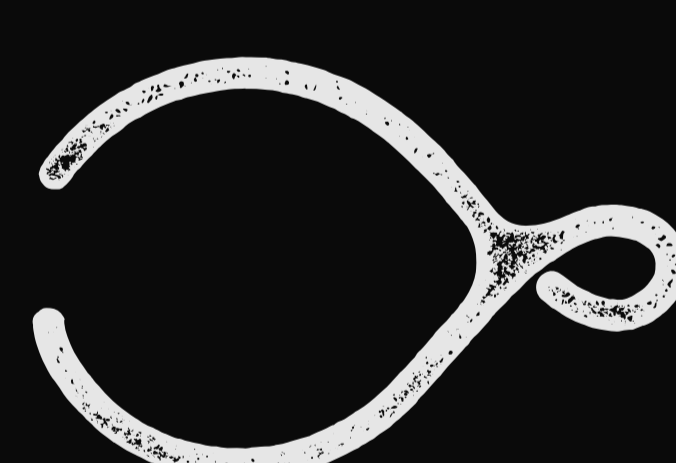
ACKNQRX



j

For flat bottom tail such as

ELZ



k

For straight bottom tail such as

GHMN

Swash to be paired with **bottom tail** of lowercase character.

ALL SWASH



l



m



n



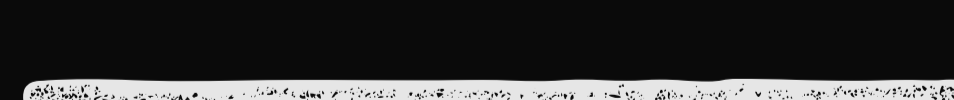
o



p



q



r

Swash to be paired with your random words.

NOTE

The font size of *Old Pines (Regular, Aged, Press)* and *Old Pines Swash* must be in the same size for the great result.

You can play the swash with your creativity (eg. Flip, Rotate .etc)

THANK
YOU